

Night Programs for Nocturnal Types

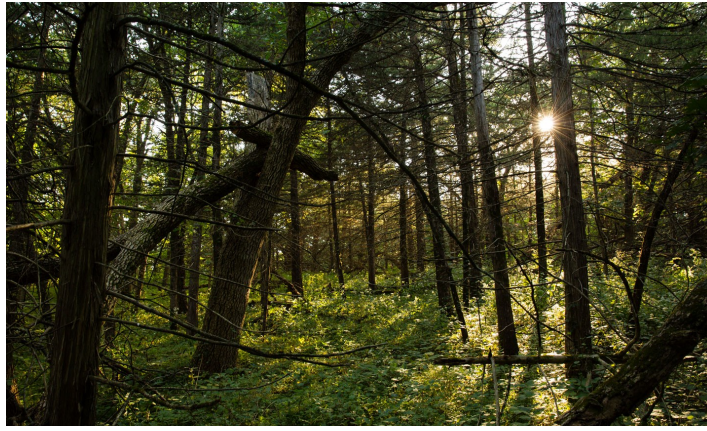
Nature at Nightfall

Time: 5 pm to 10 pm at each location

- Schramm Education Center on Friday, June 28th
- Platte River State Park on Friday, August 9th

Nature at Nightfall is an evening celebration of nature that is made possible thanks to many valued partners. Meet live animals, view the night sky, go on a night hike, observe bat netting science, discover moths, find pond critters and more! At arrival, look for our staff who will be handing out a program map with a full list of activities.

Note: At the Schramm Park program, the education center will be open late from 5 pm to 8 pm with special education-rate admission fees of \$2.50 youth, \$3 adults, 3 and under are free.



Goin' Bullfrogging

Time: 7:00 pm to 9:00 pm at each location

- Memphis SRA on Friday, August 16th
- Two Rivers SRA on Saturday, August 17th
- Louisville SRA on Sunday, August 18th

Learn about bullfrogs & then catch some! We will begin the evening with an informational session about bullfrog biology, regulations, catching methods & more. Next, we'll head out to the water's edge and see what we can catch.

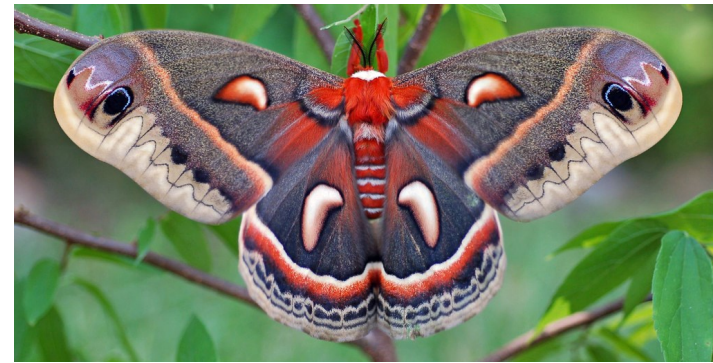
Note: NE fishing license required for ages 16 and up. Registration is required. Use QR below or call 402-332-5022.



Goin' Bullfrogging



Scan to Register!



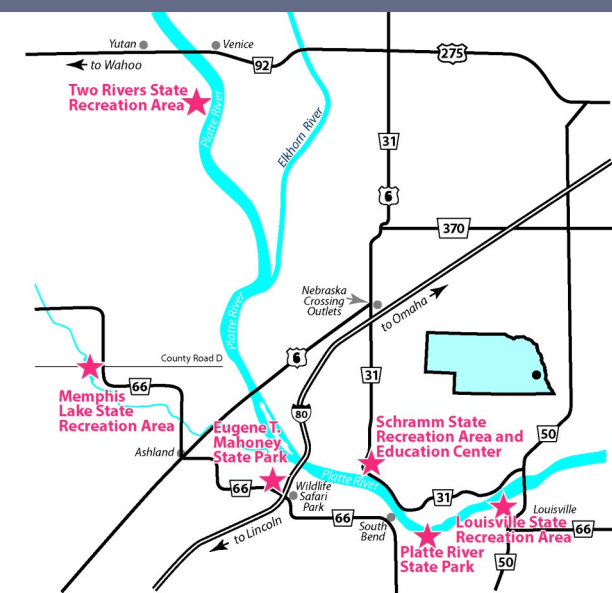
Schramm After Dark: Moth Lighting

Schramm Education Center

Saturday, July 27th from 8:30 pm to 10:30 pm

Visitors will flock to this program like moths to a porch light! Celebrate Nebraska Moth Week by learning about some of the moths in the area with local entomologists. We will attract moths to observe and identify with a sheet and light set up.

Locations & Contact Information



E.T. Mahoney State Park

Office: 402-944-2523
Email: ngpc.mahoney@nebraska.gov
28500 W Park Highway,
Ashland, NE 68003

Platte River State Park

Office: 402-234-2217
Email: ngpc.Platte.River@nebraska.gov
14221 346th Street, Louisville, NE 68037

Schramm Education Center

Office: 402-332-3901
Email: ngpc.schramm@nebraska.gov
21502 W. Highway 31, Gretna, NE 68028

Louisville SRA

Office: 402-234-6855
Email: ngpc.louisville@nebraska.gov
15810 Highway 50
Louisville, NE 68037

Two Rivers SRA

Office: 402-359-5165
Email: ngpc.two.rivers@nebraska.gov
27702 F. Street, Waterloo, NE 68069

Memphis SRA

Office: 402-944-2523 ext.7122
Nebraska 78K Recreation Road,
Memphis, NE 68042

Summer Park Programs

Mahoney, Platte River, Schramm, Louisville, Two Rivers



The Venture Park Education Team provides outdoor learning opportunities for our park guests. It is our goal to inspire appreciation and knowledge of natural and cultural resources while promoting greater understanding, support for and participation in conservation and outdoor recreation. The Venture Parks Region includes the parks of the Platte River Valley landscape near the Omaha and Lincoln Metro areas.

Visit
our nature
centers this
summer!



Schramm Education Center

Hours: Open 10 am to 5 pm Daily

Admission: \$10 Adults, \$7 Seniors & Ages 4-12, 3 & Under are free

Location: Gretna, NE at Schramm Park

Learn about Nebraska ecosystems through unique, interactive exhibits and over 60 species of Nebraska fish, reptiles and amphibians. The center has interactive mountain bikes, a pallid sturgeon touch tank, a birding area, maker space and reading nook.



James Family Conservatory and Nature Center

Summer Hours: Friday & Saturday, 9 am to 4 pm (Restrooms open daily 8:30 am to 10 pm) Additional open/public hours will be posted via a sign near the entryway.

Admission: Free, NE Park Permit required to enter park

Location: Ashland, NE at E.T. Mahoney State Park

Visit the new addition to the conservatory and greenhouse! Our naturalists will have nature-related activities available and a few live animals to share. See the plants and enjoy the warmth in the greenhouse. Restrooms are available in the lobby.



Platte River State Park Nature Center

Summer Hours: Wednesday, 9 am to 2 pm, Thursday, Friday & Saturday, 1 pm to 4 pm

Admission: Free, NE Park Permit required to enter park

Location: Louisville, NE at Platte River State Park

The nature center has a classic, nature-nook feel with lots of things to learn about with one of our naturalists. You'll find live animals, furs, tracks, insect displays and activities. The nature center is located below Mallet Lodge near the wooden tower.

VISIT FOUR VENTURE PARKS IN A DAY!

The Venture Park Adventure is a virtual geocache program that will lead you on a mission through four parks in the region. Simply download the Adventure Lab app, then use your phone's native QR code scanner to open the "NGPC Venture Adventure" and start exploring park destinations. Each GPS location will give you a clue to solve a question, then enter it in the app to complete the challenge.



PROGRAM FAQ's: Programs are subject to cancellation due to inclement weather or other circumstances. If weather cancellations occur, when possible, we will offer an alternative program at the nature center. Youth must be accompanied by an adult. Please dress appropriately for the activity and the weather. Programs are free unless a fee is noted. A Nebraska Park Entry Permit is required on all vehicles entering Nebraska State Parks and Recreation Areas. Programs are intended for general-audience park guests. If you would like to do these programs with a group, schedule an event at a nature center or have other program-related questions email kelly.ekue@nebraska.gov or call (402) 332-5022.

Regularly Scheduled Programs May 31st to August 15th

MONDAY

Schramm Education Center

- **10 am Bird Feeder Watch** Meet us at the outdoor birding area to learn about the birds which are common visitors to our feeders. Observe their behaviors and learn about some of their unique adaptations.

TUESDAY

Platte River State Park

- **9 am to 11:30 am Crawdad Creek** Roll up your pant legs and meet us at Crawdad Creek. Net and identify the critters you find and discuss their role in the ecosystem.
- **1 pm Scavenger Hunt** Meet at the Nature Center to join a naturalist on a short hike into the forest and see how many things you can find with a scavenger hunt.

Mahoney State Park

- **1 pm to 2 pm Sling Shots** Try out this game of skill! Use a sling shot to test your precision and accuracy. Meet behind Bur Oak picnic shelter. Ages 5 and up.

WEDNESDAY

Platte River State Park

- **9 am to 12 pm Crawdad Creek** Roll up your pant legs and meet us at Crawdad Creek. Net and identify the critters you find and discuss their role in the ecosystem.
- **1 pm Birds** Meet in the nature center to learn about Nebraska birds and the hobby of birding.

Mahoney State Park

- **9 am to 10:30 am Archery** Try your aim at the targets in this introductory archery program. Meet behind Bur Oak picnic shelter. Ages 5 and up
- **10:30 am to 12 pm Atlatl** Try your skill at launching a spear with an atlatl, a primitive weapon historically used to hunt bison. Meet behind Bur Oak picnic shelter. Ages 5 and up.
- **1 pm to 2:30 pm Wildflower Wednesday** Park naturalists will lead wildflower-themed activities and guide you on a hike to find flowers in the park. Meet at the James Family Conservatory & Nature Center lobby.

THURSDAY

Platte River State Park

- **9 am to 12 pm Crawdad Creek** Roll up your pant legs and meet us at Crawdad Creek. Net and identify the critters you find and discuss their role in the ecosystem.
- **2 pm Snakes** Meet in the nature center to learn about the habitats and adaptations of Nebraska snakes with a live animal ambassador.

Mahoney State Park

- **9:30 am to 11am Sling Shots** Try out this game of skill! Use a sling shot to test your precision and accuracy. Meet behind Bur Oak picnic shelter. Ages 5 and up.
- **2 pm to 3:30 pm Archery** Try your aim at the targets in this introductory archery program. Meet behind Bur Oak picnic shelter. Ages 5 and up
- **4:30 pm to 7:30 pm Toasty Marshmallow Time** Visit the nature center, explore an interactive trail, meet a live reptile, enjoy nature activities and roast a marshmallow with our education team. (Note: We will start at 5:30 on June 6th)

FRIDAY

Platte River State Park

- **9 am to 12 pm Crawdad Creek** Roll up your pant legs and meet us at Crawdad Creek. Net and identify the critters you find and discuss their role in the ecosystem.
- **2 pm Turtles!** Meet in the nature center to learn about the habitats and adaptations of Nebraska turtles with a live animal ambassador.
- **5 pm to 7 pm Canoeing & Kayaking** Join us at Owen Landing to float in a kayak or canoe. Paddling is available for all skill levels and equipment is provided. Participants must fit in a life jacket to participate.

Mahoney State Park

- **9:30 am to 12 pm Beginner Fishing** Join our naturalists at Owen Marina to give fishing a try. We'll show you how to bait a hook, cast a line and catch a fish. NE fishing license required for ages 16 and up.
- **10 am and 3 pm Reptiles** Learn about Nebraska reptiles with live animal ambassadors. Meet at the James Family Conservatory & Nature Center classroom.
- **1 pm to 2 pm Atlatl** Try your skill at launching a spear with an atlatl, a primitive weapon historically used to hunt bison. Meet behind Bur Oak picnic shelter. Ages 5 and up.
- **1 pm to 3 pm Life Around the Lake** Join a naturalist at Owen Marina to learn all about life at the lake. Meet a turtle, dip a net in the pond and learn about aquatic ecosystems.

SATURDAY

Schramm Education Center

- **11 am Naturalist Choice Program** Join a naturalist for a short, guided program on a Nebraska nature topic. Meet in the lobby of the Schramm Education Center.

Platte River State Park

- **9 am to 12 pm Beginner Fishing** Join our naturalists at Owen Landing to give fishing a try. We'll show you how to bait a hook, cast a line and catch a fish. NE fishing license required for ages 16 and up.
- **2 pm Reptiles** Meet in the nature center to learn about Nebraska reptiles with live animal ambassadors.

Mahoney State Park

- **9 am to 10:30 am Archery** Try your aim at the targets in this introductory archery program. Meet behind Bur Oak picnic shelter. Ages 5 and up
- **11 am and 2 pm Working Greenhouse Tour** Learn about our greenhouse and enjoy plant-related activities. Meet at the James Family Conservatory & Nature Center lobby. (Note: No tours June 29th due to Mudville event.)

SUNDAY

Schramm Education Center

- **1 pm Naturalist Choice Program** Join a naturalist for a short, guided program on a Nebraska nature topic. Meet in the lobby of the Schramm Education Center.

Platte River State Park

- **9 am to 11 am Breakfast & Birding** Start your Sunday morning with breakfast at Scott Lodge Restaurant then head outside to the deck area and enjoy bird-themed resources and activities.

Special Programs and Events Going on this Summer



SRA Saturdays

We'll be out and about at the State Recreation Areas on select Saturday afternoons with an observation station and a variety of outdoor activities to explore. Look for our naturalist table and stop in anytime during these hours.

Time: 1 pm to 3:30 pm at each location

June 8th at Louisville SRA

Meet at the park shelter across from concessions.

June 22nd at Two Rivers SRA

Meet at the shelter north of lakeside campground.

July 6th at Memphis SRA

Meet near the playground and nearby park shelter.

July 13th at Louisville SRA

Meet at the park shelter across from concessions.

July 20th at Schramm Park SRA

Meet at the shelter by the first pond.

July 27th at Two Rivers SRA

Meet at the shelter north of lakeside campground.



Mud Pie Making

Schramm Education Center

Tuesday, June 11th at 1 pm

Friday, July 19th at 10 am

Monday, August 5th at 10 am

Make a mud pie in our Outdoor Classroom after going on an ingredient-seeking hike. Squish through a mud pie recipe while learning about soil & animals that use mud.

Round Raft Adventure

Schramm Park State Recreation Area

Tuesday, June 25th from 3 pm to 6 pm

Tuesday, July 16th from 3 pm to 6 pm

Saturday, July 20th from 10 am to noon

Tuesday, July 30th from 3 pm to 6 pm

Saturday, August 3rd from 10 am to noon

Round Rafts are the perfect water craft for floating around in a pond. Look for the Round Raft Adventure trailer in the park area during the listed times. You must fit in a lifejacket to participate (sizes XXS to 4XL).



Pollinator Party

Schramm Education Center

Saturday, June 15th from 10 am to 2 pm

Celebrate pollinators and plants with a variety of activities for all ages! See live bees and watch honey extraction with the UNL Bee Lab. Explore pollinator gardens with Master Naturalists. Pick up plants for your backyard pollinators from the NE Statewide Arboretum plant sale on site.



Mudville

Mahoney State Park

Saturday, June 29th from 12 pm to 5 pm

Yes, you'll get muddy and should definitely pack a change of clothes. Join us at the Outdoor Pavilion for excitement, education and mud! Make mud pies & mud art, dig in dirt and discover our slip & slide with a very muddy twist! Dress for a muddy mess.